



In this week's edition...

ANNOUNCEMENTS, INFO & UPDATES	AUDIENCE	TASK
Introduction	All	Info
Policy Consultation: SEND Policy	All	Info
Reminder: LSP Operational Away Day Sign Up	SBMs, Office Managers, HR & Estates Leads	Reminder
School websites - Checklist for DfE requirements	Heads, SBMs & Office Managers	Info
H&S Committee meeting agenda - Radiation services (Secondary schools)	Secondary SBMs	Action
DPO Support Calls	SBMs	Info
KCSIE, LSP Safeguarding Policy and annual update training	Heads, SBMs and Safeguarding Leads	Info
DfE Senior Mental Health Leads training	Heads & DSLs	Action
School Nursing Service	All	Info
HR UPDATES	AUDIENCE	TASK
Long Service Awards	Heads & HR Leads	Action
GOVERNANCE UPDATES	AUDIENCE	TASK
New Trustee Recruitment	Governors	Info
CPD UPDATES AND OPPORTUNITIES	AUDIENCE	TASK
School Development Planning for next year	Headteachers	Info
Reminder: Lighthouse Learning Network Sign-up for 2024/25	Headteachers	Reminder
Early Career Teachers	Heads & SBMs	Action
Unlocking Excellence English Hub	All	Info
Unlocking Letters and Sounds - LSP Schools Training	Primary Staff	Info
KEY LINKS, DATES AND DEADLINES		



LIGHTHOUSE SCHOOLS PARTNERSHIP

Introduction

Dear Colleagues,

I'm very much looking forward to our first LSP Governance Conference this Thursday at Backwell School. We have chosen the theme of Stakeholder Governance to tie the event together and our main input will be from Joy Harcup, whose recent book 'The Art and Psychology of Board Relationships: The Secret Life of Boards' explores some of the dynamics and complexities of board-level work. Joy will be sharing her research on the motivations and behaviour of governance that makes a real and positive difference.

This has got me thinking and I believe that our Trustees and Governors are doing more nuanced and more differentiated roles than our current Scheme of Delegation or Terms of Reference acknowledge. Local Governing Bodies (LGBs) in particular are carrying a very great responsibility as they are the real location of stakeholder governance in LSP. The only people that we elect sit as school governors and it is the LGBs who focus on the school's effectiveness in serving the precise needs of its locality. They also advocate for the school's needs within the larger Trust.

In saying that I don't in any way wish to minimise the importance of our Board of Trustees as the responsibilities for strategy, employment and legal/financial compliance weigh heaviest there. The Board deliver the whole gamut of corporate governance for a large employer with a budget greater than £75m.

I'm hoping that through our conference and perhaps in a dialogue that follows we can work together to sharpen our thinking about how our governance might be refined to ensure that it really serves our stakeholders: our pupils, our colleagues and our communities

As ever,

Gary Lewis,

Chief Executive



Policy Consultation: SEND Policy

We are today launching a consultation on our updated SEND Policy. The proposed Policy is available on [Foldr](#): *LSP Communications\Consultations\Policy consultations\SEND Policy - June 2024*

The consultation period will run from Wednesday 12 June to 10.00am on Wednesday 3 July 2024. Where possible, the proposed changes have been highlighted for your information.

The final policy, incorporating comments from the consultation as appropriate, will be agreed by the Board of Trustees on Wednesday 4 July and then shared with schools.

We would like to encourage Headteachers, Trustees, Local Governing Bodies, SENDCOs and School Business Managers to participate in this consultation. I will also be discussing the new policy with Headteachers and SENDCOs at upcoming network meeting.

Please submit your comments on the consultation to enquiries@lsp.org.uk by 10.00am on Wednesday 4 July. If you would like to submit changes to the policy, please highlight your changes or make them using tracked changes and also send them to this email address.

Can I take this opportunity to remind you that individual schools are required, by the Department for Education, to publish a SEN information report which should be updated annually and any changes to the information occurring during the year should be updated as soon as possible. Further guidance on this can [be found here](#).

Debbie Coker, Director of Inclusion

Reminder: LSP Operational Away Day Sign Up

Thank to all those who have already sign up to the Operational Away Day on Tuesday 2 July. If you are planning on attending please ensure you [complete this online form](#) by 12noon on **Wednesday 19 June 2024**.

In the next week or so we will send out the agenda and details on how to sign up to specific workshops/activities.

School websites - Checklist for DfE requirements

Following on from the article in the bulletin on [Wednesday 22 May](#) regarding updates to the Department for Education school website requirements [The Key](#) have now published a new checklist for schools to run through to ensure their website is DfE compliant.

You can [click here to download this document](#) which you may find helpful when checking your sites are all up to date.

H&S Committee meeting agenda - Radiation Services (secondary schools)

Please ensure that the latest version of the Health and Safety Committee Meeting Agenda is being used for your H & S committee meetings as the following has been added:

4. g) *Radiation Services Annual report (if applicable).*

The template agenda can be found [in Folder:](#)

LSP Policies/Operational Policies/Health & Safety/Health and Safety Policy Appendix 7
Template Agenda for H & S Cttee Sep 23

This is usually carried out in Term 5 or 6 by your Radiation Protection Supervisor. There is also a corresponding task in iAM: **Ionising Radiation Annual RPS report.**

If you have any questions about this please contact [Beth Watts](#) or speak to your Radiation Protection Supervisor.

DPO Support Calls

All schools have now had their 2023-2024 DPO support call and should also have received their report from One West. The report identifies any changes in risk ratings since the last audit and also lists any remaining actions, please take some time to review the report and act on the recommendations. Next year we plan to include these DPO audits in iAM Compliant so that any actions are visible and easily monitored/reported on.

If you have any questions regarding DPO support calls or any of the identified actions please do not hesitate to [contact Trust Services](#).



KCSIE, LSP Safeguarding Policy and annual update training

I am pleased to let you there are very few changes in Keeping Children Safe in Education (KCSIE) 2024. We will have the following with you before the end of term:

- Updated 2024 LSP Safeguarding and Child Protection Policy
- Annual Safeguarding refresher slides and materials
- A checklist of actions to be ready for the new academic year

Janine Ashman, Director of Learning

DfE Senior Mental Health Leads training

69% of schools in North Somerset have now accessed a DfE grant, enabling them to train a Senior Mental Health Lead to develop a whole school approach to the mental health and wellbeing of children and young people. The funded training offers full flexibility to meet the needs of the individual setting. If the trained Mental Health Lead has since left the post, a second grant is still available to train a new member of staff. Full details of the grant and [how to apply can be found here](#) and [a flyer can be found on Foldr](#) with key information and links.

So we understand the position of schools in LSP please can you complete [this short form](#) by Monday 1 July letting us know who your Senior Mental Health Lead is and when they completed their training.



School Nursing Service

We have received the following update from Vicky Angear, Communications Officer for Children's Services, Sirona Care & health

Sirona Care & Health has been reviewing its School Nursing Service across Bristol, North Somerset, and South Gloucestershire to ensure the service is aligned across all three areas and that the service is up to date and supported by the latest evidence. As a result of the review, we have made some adjustments to the service which are detailed below:

Referrals for one-to-one support

We have a new referral form and updated referral criteria for one-to-one support. These provide clear guidance for schools, families, young people, and health professionals. When a child or young person is referred for one-to-one support, they can access one of three short interventions called support packages. These are:

- Keeping ourselves well
- Emotional wellbeing - understanding thoughts and feelings
- Getting a good night's sleep

The support packages provide up to four face-to-face sessions with a school nurse.

Secondary Schools

Secondary School drop-ins will continue, but we are currently reviewing them. We know schools, young people and School Nurses can find drop-ins difficult to manage or access and we are looking at a range of options for this service. Secondary schools will continue to have a named School Nurse link.

Primary Schools

School Nurses will start to offer monthly drop-in sessions for parents and carers in primary schools to enable them to discuss a range of issues. Primary schools will continue to have a named School Nursing Team link.

Group sessions

School nurses plan to offer small group sessions for children, young people, and parents, and these can be arranged by talking with your School Nurse or the School Nursing Team.

ChatHealth

Young people aged 11-19 can also get support from our School Nursing team by using our text messaging support service, ChatHealth. Young people can send a text message to 07312 263093 to receive confidential advice and support from a School Nurse on a range of issues. ChatHealth is also available during school holidays.

You can find the referral forms and more information about the service on the [School Nursing Service page](#) on our website. Please also find [on Foldr a letter](#) detailing some changes to how Sirona's School Nursing service supports schools with healthcare plans. If you have any queries, please speak to your School Nurse or School Nursing team.

Long Service Awards

As you are aware, as a Trust, we reward long service for staff with 20 or 25 years service.

As we come to the end of the academic year, please can you check if any of your staff are eligible for a long service award and contact the [Central HR Team](#) with the application form to start the process.

We will also be recognising all those who have reached this milestone since December in the summer edition of The Beacon so we are keen to not leave any colleagues off the list! To make sure colleagues are included in newsletter please ensure you have contacted the Central HR Team by the start of July.

A copy of the Long Service Award Policy can be found on [Foldr: L:\LSP Policies\HR Policies](#)

GOVERNANCE UPDATES

New Trustee Recruitment

LSP seeks to have a broad range of skills and characteristics on the Board of Trustees, with experience and expertise from across a variety of backgrounds. We are keen to hear from experienced LSP governors who would like to move their governance commitment to the wider context of the Trust and become part of the Trustee Board, ideally from September 2024.

This role is broader than local governance and requires a time commitment of at least 8 hours a month. There are 10 Board of Trustees meetings each year which are held in the afternoon or early evening, either on site or virtually. There are also three committees to the Board - Finance (11 meetings per year), Audit & Risk (6 meetings per year) and HR & Staffing Committee (3 meetings per year). You can find out more about being a Trustee on [our website](#).

If you are interested in the position, or would like to find out more, please email [Chris Hills, LSP Governance Professional](#) with a brief resume covering your governance experience and personal qualities.

Adele Haysom, Chair of Trustees





Upcoming Lighthouse Learning Sessions and CPD Networks

Please email [Lighthouse Learning](mailto:info@lighthouselearning.co.uk) if you have any questions about the below events.

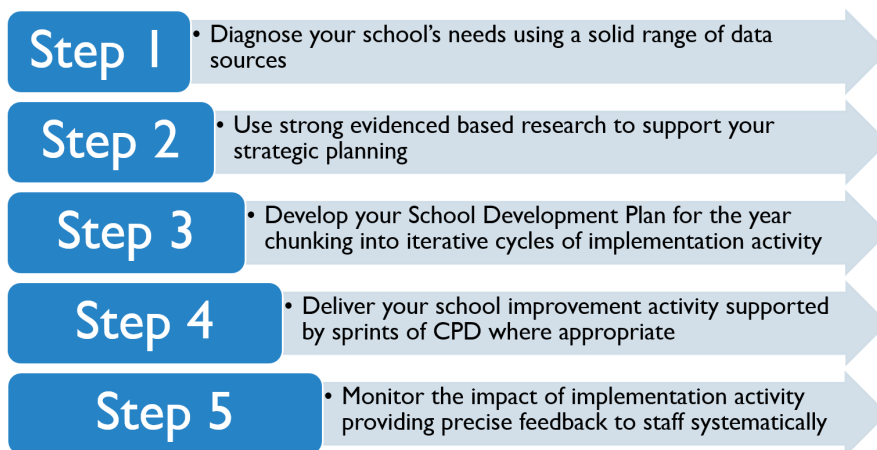
Date	Event	Audience
Term 6		
Thursday 13 June 5.30pm - 7.45pm	LSP Governance Conference @ Backwell School	Trustees, Clerks & Chairs
Monday 17 June 1.00-4.00pm	LSP Early Years Framework Network @ St Peters Agenda to follow in due course from Lighthouse Learning	Early Years Leads
Tuesday 18 June 1.00-3.00pm	Church Schools Network More details to follow in due course from Lighthouse Learning	Church School Heads
Monday 24 June 3.45-5.00pm	LSP Assessment Network. Online Agenda and link to follow in due course from Lighthouse Learning	Assessment Leads



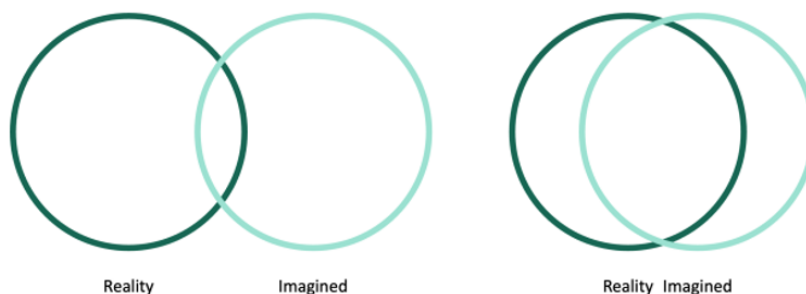
School Development Planning for next year

As we move towards the end of the year we are all beginning to plan the priorities for the year ahead. In my meeting with Primary Heads in the last week it has been great to hear that many of you are planning to continue work on some of the priorities you have begun to work on this year where the work has yet to become embedded. This is really sensible where priorities were big pieces of work, for example introducing an updated approach to teaching and learning across the school. We cannot be afraid of doing this! If we are really investing in long-term change we need to recognise that some changes are going to take longer to really take hold, particularly where we are trying to change habits and culture.

As a reminder, we recommend having 3 or a very maximum number of 4 priority areas in your plan so that everyone knows what you are working on, why, how and what impact this work will have. Earlier this year we defined in our School Improvement Strategy a 5 step model to school development planning (below) - integral to this are iterative cycles of implementation activity with training monitoring and feedback to staff. Have this in mind when forming your plan and remember that if we do not spend time training and showing staff what they need to do, they are far less likely to do it in the way we intend (we all need a WAGOLL). Likewise if we do not give individual feedback staff are unlikely to know if they are being successful and so habits are less likely to change.



Attached is a [link to a blog](#) from Nick Hart that I came across on Twitter recently where he talks about the role of a school improvement plan and how we can tackle it. There are some really sensible tips around creating clear measures of success, involving everyone in the plan, the delivery and monitoring and tips for regular monitoring to close the gap between 'the imagined school' and the reality.



Neil Lankester, Director of School Improvement

Reminder: Lighthouse Learning Network Sign-up for 2024/25

Thank you to those who have already completed the form for their school - it is much appreciated.

If you have not yet done so a reminder to please complete the sign-up form for the Lighthouse Learning CPD Networks for 2024-25 by 10.00am Friday 14 June.

[Click here for primary network sign up 2024-25](#)

[Click here for secondary network sign up for 2024-25](#)

If you have any questions please email lighthouselearning@lsp.org.uk

Early Career Teachers

We know that many of our schools have appointed ECTs to start in September. Please remember that you will need to:

- Register the ECT and their mentor with the DfE
- Select Five Counties Teaching School as the Appropriate Body Provider
- Register ECTs with our ECF providers - EDT for Primary Schools and Ambition for Secondary

ECTS Mentors will also need training if they have not completed this previously and each school will need an Induction Tutor.

[Details of the process are here](#) but please [contact me](#) if you have any questions.

Janine Ashman, Director of Learning and Unlocking Excellence English Hub Lead



Unlocking Excellence English Hub

Unlocking Excellence English Hub are delighted to share our **2024 - 25 CPD Programme** with you. We know that you will be planning your school development at the moment and hope that, by sharing this with you, you will be able to incorporate our programme into your plans. Full details (and booking links) can be found [here](#) or here on our [website](#).

We have carefully designed our offer to meet the needs of schools in our region. It includes some exciting new programmes:

- **Reading Ambition for All, including those with SEND:** an exciting programme created by SEND and phonics experts to support schools to meet the needs of the lowest attaining pupils.
- **Application to Phonics:** looking to support our early writers to practice and apply their phonics in writing
- **Reading for Please Regional Conference:** a full days conference engaging with national and international experts to support schools to ensure that every child has a love of reading

Places at all CPD are limited so please book quickly. As always, all our CPD is funded so there is no cost for your school and staff to attend: we know how important this is when school budgets are so tight.

If you have any questions please get in touch. We look forward to working with you next year!

Janine Ashman, Director of Learning

Unlocking Letters and Sounds - LSP Schools Training

Lighthouse Learning is funding full ULS CPD for new members of staff in our Primary Schools. This will be whole day training on the following dates in the English Hub Room, St Peter's Primary, Portishead 8.30 - 3.30pm (staff only need to attend one date):

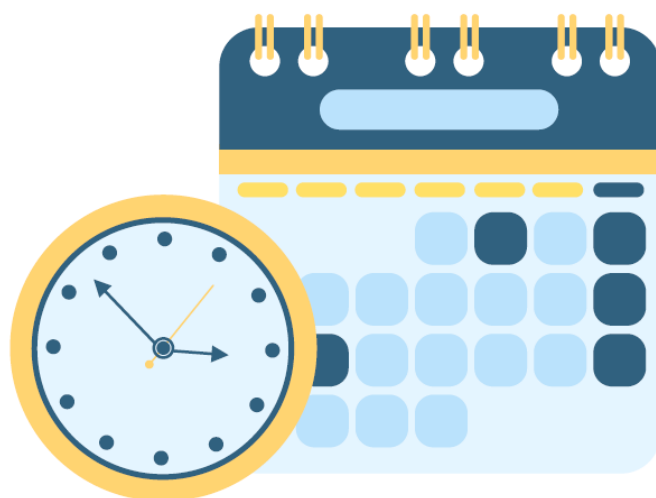
- Wednesday 18 September
- Wednesday 15 January 2025
- Wednesday 21 May 2025

This training is for all new staff (teaching and support) in all year groups - it is essential that all school staff receive training in your phonics programme.

There is no cost to our schools for this but places are limited so please only book what you need. Schools will be charged £50 for non attendance. You can [book here](#).

Janine Ashman, Director of Learning

Key Dates and Deadlines



DATE	KEY DATE OR DEADLINE	FAO
Wednesday 12 June	Headteacher's Meeting and Winston's Wish Training for Senior Leaders at Nailsea Baptist Church Click here to view the agenda.	Heads
Thursday 13 June 5.30pm - 7.45pm	LSP Governance Conference @ Backwell School	Trustees, Clerks & Chairs
12noon Wednesday 19 June	Deadline to sign up for LSP Operational Away Day. Click here to sign up	SBMs, HR, Office Man- agers, Es- tates Leads
Wednesday 26 June	Deadline for consultation and feedback on updated Risk Management Policy.	Heads, Chairs & SBMs
10.00am Wednesday 3 July	Deadline for consultation and feedback on updated SEND Policy.	All

KEY LINKS

These reminders do not replace the Annual Planner so please ensure you are checking this regularly.

Please note the following links will only work for those who already have access to the relevant site or folder. If you feel you need to be given permission to access something please [let us know](#).



Annual Planner 2023/24

Click to view the Annual Planner
(Via Sharepoint)

Annual Planner 2024/25

Click to view the Annual Planner for next
academic year (Via Sharepoint)



Bulletin Index

Click to access an index of
previous bulletin articles

Previous Bulletins

Click to access previous editions of the
LSP Weekly News Bulletin



The Beacon

Click to read the latest edition of the
LSP Newsletter: The Beacon



SHARE WITH US

Don't forget, you can submit your school news stories to
be shared in our newsletters and on our social media.

Email your stories to: newsletter@lsp.org.uk