



In this week's edition...

ANNOUNCEMENTS, INFO & UPDATES	AUDIENCE	TASK
Introduction	All	Info
Scheme of Delegation	All	Info
DfE: Breakfast club early adopters scheme	Primary Heads	Info
LSP Headteacher Meeting Dates and Venues	Heads & Heads PAs	Action
HR UPDATES	AUDIENCE	TASK
ESS access and signing of declarations	Heads, SBM/Oms, HR Leads	Info
GOVERNANCE UPDATES	AUDIENCE	TASK
Next LSP Chairs' Forum	Chairs	Info
Health and Safety Committees and Link Governors	Clerks & Chairs	Info
Final reminder: Annual Safeguarding Declaration for Governors 2024-25	Clerks	Reminder
LSP Governor Vacancy List	Clerks	Reminder
CPD UPDATES & OPPORTUNITIES	AUDIENCE	TASK
Upcoming Lighthouse Learning Sessions and CPD Networks	All	Info
SEND webinar: Demand Avoidance	All	Info
English Hub CPD: Reading for Pleasure	Headteachers, Reading Leads	Info
KEY LINKS, DATES & DEADLINES		



LIGHTHOUSE SCHOOLS PARTNERSHIP

Introduction

Dear Colleagues,

I was interested to read a couple of blogs on the [NFER website](#). The 5th September blog explores how the drop in pupil numbers is not turning out to be as deep as the projections had forecast. There may be a glimmer of hope there. The 25th September blog considers what schools do when faced with empty places and what sorts of schools are bucking the trend. Changing class structures is the obvious and most effective mitigation but a hard thing to achieve in village schools. So far so obvious. What interested me in the second blog was the probing of what factors affect which schools decline and which buck the trend. Ofsted ratings still count. So too does the brand of the school, with stable academies having a slight advantage on maintained schools.

This last area has got me thinking. Do we market the brand and real advantage of working in a strong educational partnership? Is the Lighthouse badge a quality mark? I suspect that parents will not yet consider how this aspect of a school's context will affect the quality of education and experience that a child will have in school but by vocalising that clearly, sincerely and enthusiastically we would surely make a strong case for choosing a Lighthouse school. As you work out your pitch with colleagues and governors consider how you can give parents confidence in the value for money, educational quality assurance, shared subject networks and curriculum, SEND capacity, phonics programme, staff training offer and funding stability that we achieve together. You can also point to the strong individuality and localism that we support in our schools and how you serve your own distinct community authentically. I suspect that these factors will never rank higher than the cuteness of the Reception play area but they are all valid and real reasons and may tip the scales. We believe in the quality and values of our schools and our Trust. We buy in and so will others.

As ever,

Gary Lewis, Chief Executive

Scheme of Delegation

As mentioned in Gary's introduction [last week](#) the LSP Scheme of Delegation has been reviewed and approved by the Board of Trustees. There are a relatively small number of changes.

[Click here to view the LSP Scheme of Delegation](#). The text in red are the areas that have been updated. It has also been uploaded to our website.

If you have any questions about this please do not hesitate to contact the [LSP Central Team](#).

DfE: Breakfast club early adopters scheme

The Department has [announced](#) it will be inviting 750 state-funded schools with primary aged pupils to test plans for the national rollout of free breakfast clubs.

Full details of the scheme will be shared later this term, with early adopter schools confirmed in early 2025 to deliver breakfast clubs from April.

Schools interested in taking part can [register their interest](#) to be notified as further information is available.

CST continues to work closely with Regions Group and the DfE's policy team on the policy for Regional Improvement Teams.



LSP Headteacher Meeting Dates and Venues

Due to venue availability, we have had to make a small tweak to the Headteacher Meeting schedule for Term 2 - we will now be holding the LSP Primary Headteachers' Meeting on Wednesday 6 November and the LSP Headteachers' Meeting on Wednesday 4 December.

Here is the updated list for your information so you can amend your diaries:

LSP Headteachers' Meetings		
Date	Time	Venue
Wednesday 9 October 2024	8.30am-12.30pm	Nailsea Baptist Church
Wednesday 4 December 2024	8.30am-12.30pm	Nailsea Baptist Church
Wednesday 15 January 2025	8.30am-12.30pm	Nailsea Baptist Church
Wednesday 5 March 2025	8.30am-12.30pm	Nailsea Baptist Church
Wednesday 7 May 2025	8.30am-12.30pm	Nailsea Baptist Church
Wednesday 11 June	8.30am-12.30pm	Nailsea Baptist Church

LSP Primary Headteachers' Meetings		
Date	Time	Venue
Wednesday 6 November 2024	8.30-10.30am	Nailsea Baptist Church
Wednesday 5 February 2025	8.30-10.30am	Nailsea Baptist Church
Wednesday 26 March 2025	8.30-10.30am	Nailsea Baptist Church
Wednesday 2 July 2025	8.30-10.30am	Nailsea Baptist Church

Employee Self Service (ESS) access and signing of declarations

We have received queries from staff members trying to login to ESS, many of which are due to using the wrong link to login. Please can you provide your staff with the following link to ensure they can login:

[ESS - Login \(webitrent.com\)](https://webitrent.com)

If they have forgotten their password or need support with signing their Annual Declaration or Childcare Disqualification Form, this short video will talk them through the steps:

<https://youtu.be/V124WR2nrJU>



Next LSP Chairs' Forum

The next LSP Chairs' Forum will take place on **Thursday 17 October** from 6.30pm at Backwell School (it had originally been scheduled for Tuesday 15 October). You should have already received an Outlook calendar invitation for this date.

A reminder that you can find the full Lighthouse Learning CPD offer for Governance [on our website](#).

Health and Safety Committees and Link Governors

The [LSP Health and Safety Statement](#) requires all LSP schools to have a Health and Safety Committee and all LGBs are required to have a Link Governor for Health and Safety.

This is a key role for each LGB and the link governor will be involved in driving forward developments in health and safety for your school site and holding the school accountable to actions highlighted on health and safety audits.

The Health and Safety Policy is currently being updated, but this requirement will remain, so please begin scheduling committees and selecting your link governor accordingly.

More details will follow in due course, when the new Health and Safety policy is published.

If you have any questions about this please feel free to email the [LSP Central Team](#) and someone, either from Governance or Estates, will come back to you.



Final reminder: Annual Safeguarding Declaration for Governors 2024-25

All Governors and Trustees are expected to complete an Annual Safeguarding Declaration to confirm they have received the necessary safeguarding training/updates and to sign a number of declarations. As it forms part of the Single Central Record this declaration is compulsory and should be done swiftly after completion of essential safeguarding training (including the Prevent Refresher). The deadline is Friday 4 October 2024 for all online Governor and Trustee training and returns to be complete.

This is the link for the online declaration for Governors and Trustees for 2024-25: https://forms.office.com/pages/responsepage.aspx?id=-loIp0FXrkKtRDgOpwxaAJ_O8ibje7tBgqC2rSc_B0BUNFhaRTQyS1I3NEIHT0ZGNDg0MzZHV0kxUi4u&route=shorturl

This is the link for the supporting documentation and links: <https://www.lsp.org.uk/page/?title=Safeguarding+Declaration+Documents+2024%2D25&pid=97>

Please ensure you have shared these with your Local Governing Body.

LSP Governor Vacancy List

A reminder that we have a [central document](#) (on the [LSP Governance SharePoint](#)) where Clerks can log any current vacancies they have on their local governing body. If the LSP Admin Team are contacted by someone looking to become a governor (we have had a few enquiries recently) this helps us identify schools who could be a possible match.

Please do use this document to log any vacancies you have - it could be other Clerks, who have governors coming to the end of their term, could also use it to redirect them to another LSP LGB vacancy.





Upcoming Lighthouse Learning Sessions and CPD Networks

Please email [Lighthouse Learning](mailto:info@lighthouselearning.co.uk) if you have any questions about the below events.

Agendas, Teams links (if required) and other resources will be emailed one week in advance of each network.

The full programme of Lighthouse Learning CPD on offer for 2024-25 can be found on the [LSP website](https://www.lighthouselearning.co.uk).

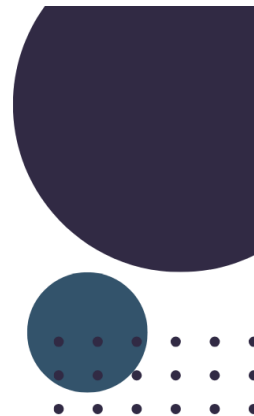
DATE	EVENT	AUDIENCE
Monday 30 September 3.30-5.00pm	Primary Assessment Network. Online via Teams	Primary Assessment Leads
Wednesday 2 October 3.45-5.00pm	LSP History Curriculum Training Session. To sign up for this webinar click here	Primary schools
Wednesday 2 October 3.30-5.30pm	Secondary Curriculum/Teaching and Learning Network. Online via Teams (link to be circulated by N Wilcox)	Secondary T&L Leads
Monday 7 October 1.00-3.45pm	Primary Deputy/Assistant Headteacher Network. Online via Teams	Primary Deputy and Assistant Heads
Monday 7 October 3.45-5.00pm	Primary Maths Network. Online via Teams	Primary Maths Leads
Wednesday 9 October 3.30–4.30pm	SEND Webinar: Demand Avoidance Open to all LSP Employees. To sign up for this webinar click here .	All
Wednesday 9 October 3.45-5.00pm	LSP History Curriculum Training Session. To sign up for this webinar click here	Primary schools
Monday 14 October 1.00-4.00pm	Primary Early Years Network. Online via Teams	Early Years Leads

SEND webinar – Demand Avoidance

This webinar is open to all LSP staff to attend.

Please share the information with colleagues, including the [link to register](#) for the webinar.

This poster, and the sign up link can also be found on the LSP CPD for Staff page [on our website](#).



SEND WEBINAR: DEMAND AVOIDANCE

WEDNESDAY 9 OCTOBER 2024

3.30-4.30PM

ONLINE: MS TEAMS WEBINAR

Open to all LSP Employees (not just teachers)
Delivered by Suzy Divine: LSP Lead Teacher for
SEND.

- Find out what is Demand Avoidance and how this can impact ability to cope and engage with classroom activities and the wider school environment.
- Explore some approaches that may help to support individuals with Demand Avoidance.



[CLICK HERE TO BOOK A PLACE](#)

Any questions email
lighthouselearning@lsp.org.uk

English Hub CPD: Reading for Pleasure

The CPD course below is available for those looking to find out more about evidence based practice to build a reading for pleasure culture in your classroom. [Find out more and book.](#)



Unlocking Excellence
English Hub at St Peter's School

Reading for Pleasure: Teacher Reading Group (TRG)

20th November, 15th January, 19th March, 21st May, 2nd July (essential to attend all sessions) Online 4 – 6pm

Are you passionate about fostering a love of reading in children? Unlocking Excellence English Hub invites teachers, librarians, student teachers, and support staff to join our **online OU/UKLA Reading Group**.

Why Join Us?

Friendly and Supportive Environment: Engage in informal, welcoming discussions with like-minded professionals.

Commit to Professional Growth: Attend all five virtual CPD sessions and become part of a dedicated community.

Evidence-Informed Practice: Develop and implement strategies grounded in the latest research.

Expand Your Literary Knowledge: Discover a wide range of children's literature and other texts.

Enhance Your Pedagogy: Enrich your Reading for Pleasure (RfP) teaching methods.

Impact Young Readers: Document and share the positive effects on your students' reading experiences.

Join us in creating a vibrant community dedicated to unlocking the joy of reading for children and young people. **Sign Up Today!**

Unlocking Excellence
English Hub at St Peter's School

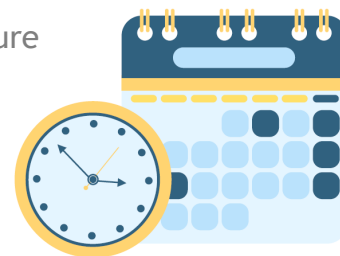
Funded by

Department for Education



Key Dates, Deadlines and Reminders

These reminders do not replace the LSP Annual Planner so please ensure you are checking this regularly (link on next page).



Key Dates

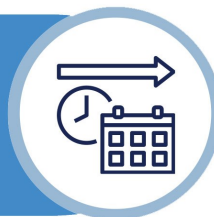
DATE	INFORMATION	FAO
2-26 September 2024	Window to submit year-end statement for National Tutoring Programme NTP allocations for 2023 to 2024 academic year .	SBMs
16-27 September 2024	Headteacher Performance Development (Appraisals) to be completed within this timeframe.	Heads & Chairs
Friday 27 September 2024	Deadline to submit Gift Aid Applications to LSP Finance Team	SBMs
Friday 4 October 2024	Final deadline for all Governors and Trustees to complete Online Annual Safeguarding Declaration .	Clerks & Chairs
Friday 25 October 2024	Deadline for Teacher and Leadership Performance Development (Appraisals) to be completed.	Heads & SBMs
Thursday 31 October 2024	Deadline for Support Staff Appraisals to be completed.	Heads & SBMs



Please note the following links will only work for those who already have access to the relevant site or folder. If you feel you need to be given permission to access something please [let us know](#).

Annual Planner 2024/25

Click to view the Annual Planner
(Via Sharepoint)



Bulletin Index

Click to access an index of
previous bulletin articles

Previous Bulletins

Click to access previous editions of the
LSP Weekly News Bulletin



The Beacon

Click to read the latest edition of the
LSP Newsletter: The Beacon



SHARE WITH US

Don't forget, you can submit your school news stories to
be shared in our newsletters and on our social media.

Email your stories to: newsletter@lsp.org.uk