



*In this week's edition...*

ANNOUNCEMENTS, INFO & UPDATES	AUDIENCE	TASK
Introduction	All	Info
Reminder: Website Accessibility	Heads & SBM/OMs	Reminder
Banking Scam Calls	Heads & SBM/OMs	Info
ESTATES & TRUST SERVICES	AUDIENCE	TASK
Reminder: Contracts Return	SBM/Office Managers	Action
FINANCE UPDATES	AUDIENCE	TASK
Budget Forecast as at 31/12/24	SBM/Office Managers	Action
GOVERNANCE UPDATES	AUDIENCE	TASK
Upcoming Governance CPD	Clerks, Chairs & LGBs	Info
Reminder: Clerks' Network	Clerks	Reminder
CPD UPDATES & OPPORTUNITIES	AUDIENCE	TASK
Upcoming Lighthouse Learning Sessions and CPD Networks	All	Info
SEND webinar: Memory and Processing - Wednesday 5 March	All	Info
KEY LINKS, DATES & DEADLINES		

## Introduction

Dear Colleagues,

Some of you may have encountered the musician Jacob Collier. He is a big thing with Gen Z apparently. I was recommended a podcast recently that featured an interview with him and I listened to it at the weekend. Collier is a very thoughtful and interesting person and he comes from a place that I don't know much about, namely YouTube. He spoke about the opportunity that YouTube offered a decade ago to let music and ideas loose into a place that was both creative and responsive. Some of this went over my head but what really stuck with me was a digression that he went into about what it means to really be part of something. He drew a comparison between participating and contributing.

I think that there is a real difference between these things and if I reflect on my own life of meetings and networks, I could identify some where I am a participant and others where I make a contribution. Obviously, the latter is the stronger of these two. For those of you who were in leadership in the days of the last Labour government (somebody, surely!), you may remember the five outcomes of the Every Child Matters initiative and that 'making a positive contribution' was an essential part of that. Full citizenship or membership of an organisation really necessitates contributing something to the whole and thereby being more fully part of it.

One of the things that we say in our partnership is that we would want every school and every leader to contribute something that nobody else could. I see those things very clearly, especially amongst our Heads. I'm writing this from Backwell school where we have just completed day one of the Headteacher interviews. I am of course looking for the contribution from one person that will be just the right thing to take Backwell forward on its journey. I'm hoping that that person will also bring something new or necessary to our Trust.

The Jacob Collier interview [is here](#) if anyone is interested, or [on Spotify here](#).

As ever,

*Gary Lewis, Chief Executive*



## Reminder: Website Accessibility

As mentioned in [last week's bulletin](#), as of October 2024, Web Content Accessibility Guidelines (WCAG) 2.2 came into force. Part of these guidelines requires schools to publish an accessibility statement to their website.

Primary and secondary schools or nurseries are partially exempt, with the exception of:

- Website content people need in order to use services (for example a form that lets you outline school meal preferences).
- All schools are required to publish an accessibility statement.

### Next steps:

#### 1. Log in to your website and set up your accessibility statement:

- We have an [Accessibility Statement Template available here](#) that you are welcome to edit and publish to your own school website. Please read through and edit where appropriate to ensure you are providing accurate information for your website.

Alternatively:

- For schools with a Juniper website, you can edit and upload the template accessibility statement that Juniper have created - you can find this by searching for [accessibility statement](#) in the help section of your Juniper website.
- For schools that do not have a Juniper Education website, [there are templates here](#).

**Please note:** Your accessibility statement should be reviewed annually to check it still contains relevant exceptions/provisions.

#### 2. Check website accessibility where applicable:

- Website accessibility involves making sure that your website content is configured in a way that people can easily access it using assistive technologies, for example, screen readers and braille displays. The Juniper Help section includes useful guides on ways you can [make your website more accessible](#).

## Banking Scam Calls

Lloyds Bank (the Trust's banking provider) has been alerted about a recent surge in scam calls related to bank accounts. In many recent attacks the scam caller tells the client that the Bank has identified suspicious transactions, before proceeding to request bank details through a number of ways.

Please alert your staff to be aware, and should you receive a call from someone claiming to be from either Lloyds, or any other bank, we would advise you do not give out any account details or passwords, and contact your bank directly through a trusted phone number.

## Reminder: Contracts Return

Please be reminded, as per the information previously circulated (see below), the deadline for the completion of the Contracts Return is next **Wednesday 12 February**.

For centralised schools there is no current action, but we will be in touch shortly to double check the returns we have produced for your school.

Information for reference, if needed:

*(sent 13/11/2024 and 18/12/2024)*

*Trust Services are reviewing the contracts, licences and subscriptions currently in place with schools. The intent is to identify areas for potential group purchasing and therefore cost reduction. It's a big task but one that hopefully will help schools in the long run.*

*To help with this process, please can you complete a contracts sheet for your school to supply us with the relevant data for analysis. We have set up a spreadsheet to assist with this.*

*We are really conscious that this may feel like an additional job when everything is always so busy, so have built in a longer timescale for this return. On the plus side you will likely already have this information collated for budget preparation and so we will gladly receive the information in any other format you may currently use at school. It must just provide data for the same headings as listed on our spreadsheet.*

*The spreadsheet for your school is located in the Business Continuity, Cyber Security & Risk Register Teams. There is a Contracts Return folder within your individual school's channel and the spreadsheet is located within this folder. If any staff completing the return do not already have access to the Teams, please let us know and we can add them.*

*Please can this be completed or alternative returned by **Wednesday 12 February 2025**. If you have any queries, please do not hesitate to contact Trust Services.*



## Budget Forecast as at 31/12/24

Thank you to School Business Managers, and any other staff involved, for producing your budget forecast report as at 31<sup>st</sup> December for the 2024-25 financial year. The Central Team have now checked your submissions for reasonableness and have reported the collated information to the Board of Trustees Finance Committee. The feedback from our quality assurance checks can be found on Foldr *under*:

*Information for 2024-25 Budgets - Monitoring Feedback.*

Please enter your LA and DfE number to find the information for your school. Please ensure that this feedback is reported to your next LGB meeting, and be aware that we do not have sufficient information to determine whether your projections are completely accurate or not. Checks have been carried out for reasonableness and information has been provided to indicate any areas that may need further investigation to ensure that your projections are accurate. If you need any further information, please do not hesitate to [contact the Central Team](#).

Thank you.

*Sue Warneford-Thomson, School Support Finance Manager*



## Upcoming Governance CPD

There are a number of Governance CPD events in the coming weeks:

Training	Date and Time	How to attend
<p><b>New Governor Training</b></p> <p>Delivered by Chair of Trustees and CEO this is an introduction to governance within LSP and is for all new governor and current governor looking to refresh their skills</p>	<p>Tuesday 25 February 7.00-8.30pm</p> <p>Or</p> <p>Wednesday 26 Feb 10.-30am-12noon</p>	<p>MS Teams Links will be circulated to Clerks by Governance Professional very shortly.</p>
<p><b>Lighthouse Learning Webinar: Pupil Premium</b></p> <p>Webinar with Director of Secondary Education regarding supporting and improving outcomes for Pupil Premium pupils at all stages (primary and secondary).</p>	<p>Tuesday 4 March 6.00-7.00pm</p>	<p><a href="#">Click here</a> to sign up for this webinar</p>
<p><b>Secondary Assessment Data</b></p> <p>Webinar with Director of Secondary Education regarding understanding and challenging secondary assessment data.</p>	<p>Tuesday 11 March. Time TBC</p> <p>Wednesday 19 March 7.00-8.00pm</p>	<p><i>Webinar link to be released shortly.</i></p>
<p><b>Chairs' Forum</b></p> <p>Updates and discussions on latest governance themes.</p>	<p>Or</p> <p>Wednesday 26 March 10.00-11.00am</p>	<p>MS Teams Links will be circulated to Chairs by Governance Professional very shortly.</p>

A reminder that the full Lighthouse Learning Programme can be found [on our website](#).

If you have any questions please email the [Lighthouse Learning Team](#).

## Reminder: Clerks' Network

Our next Clerks' Network takes place tomorrow (Thursday 6 February) from 1.00pm.

Chris Hills, Governance Professional, has already circulated the Teams link.

We look forward to seeing as many Clerks as possible.





## Upcoming Lighthouse Learning Sessions and CPD Networks

Please email [Lighthouse Learning](#) if you have any questions about the below events.

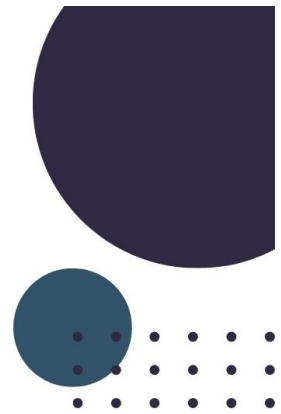
Agendas, Teams links (if required) and other resources will be emailed one week in advance of each network. The full programme of Lighthouse Learning CPD on offer for 2024-25 can be found on the [LSP website](#).

DATE	EVENT	AUDIENCE
Monday 10 February 1.00-4.00pm	<b>Primary Assistant/Deputy Heads Network</b> English Hub @ St Peter's	Primary Assistant/ Deputy Heads
Monday 3 March 3.30-5.00pm	<b>Primary Assessment Network</b> Online via MS Teams	Primary Assessment Leads
Tuesday 4 March 6.00-7.00pm	<b>Governor CPD: Pupil Premium</b> <a href="#">Click here</a> to sign up for this webinar	All Governors
Wednesday 5 March 3.30-4.30pm	<b>SEND Webinar: Memory and Processing</b> <a href="#">Click here</a> to sign up for this webinar	All staff
Monday 10 March 1.00-4.00pm	<b>Primary English Network</b> English Hub @ St Peter's	Primary English Leads
Tuesday 11 March 6.00-7.00pm	<b>Governor CPD: Secondary Assessment Data</b> <i>Webinar link to be released shortly</i>	All Secondary Gover- nors
Wednesday 12 March 3.30-4.30pm	<b>Trust-wide Priory Pupils Network</b> Online via MS Teams	Priority Pupils Leads
Wednesday 12 March 3.45-5.15pm	<b>White Rose Maths Mixed Age Webinar: Enable and Extend</b> Link already circulated to attending schools	Specific LSP Schools
Monday 17 March 1.00-4.00pm	<b>Primary History Network</b> English Hub @ St Peter's	Primary History Leads

SEND webinar: Memory and Processing - Wednesday 5 March



LIGHTHOUSE  
LEARNING



# SEND WEBINAR: MEMORY & PROCESSING

**WEDNESDAY 5 MARCH 2025**

**3.30-4.30PM**

**ONLINE: MS TEAMS WEBINAR**

Open to all LSP Employees (not just teachers)  
Delivered by Suzy Divine: LSP Lead Teacher  
for SEND.

This session will focus on:

- An introduction to memory and processing - how we use these to learn.
- What can happen when memory and processing is an area of difficulty.
- How we can help those with memory and processing difficulties in the classroom.

Sign up for this webinar using link below.

Any questions email [lighthouselearning@lsp.org.uk](mailto:lighthouselearning@lsp.org.uk)



[Click here to book your place](#)



## Upcoming Lighthouse Learning Sessions and CPD Networks

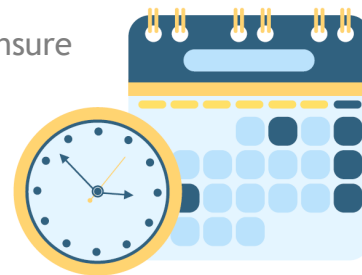
Continued.....

DATE	EVENT	AUDIENCE
Monday 17 March 1.00-4.00pm	<b>Trust-wide SEND Network</b> Online via MS Teams	SENDCOs
Wednesday 19 March 3.30-4.15pm	<b>Trust-wide Attendance Network</b> Online via MS Teams	Attendance Leads
Wednesday 19 March 7.00-8.00pm Or Wednesday 26 March 10.00-11.00am	<b>Chairs' Forum</b> Online via MS Teams. Link will be circulated by Governance Professional in due course.	Chairs
Monday 24 March 3.30-5.00pm	<b>Primary Science Network</b> Online via MS Teams	Primary Science Leads



# KEY DATES, DEADLINES & REMINDERS

These reminders do not replace the LSP Annual Planner so please ensure you are checking this regularly (link on next page).



## Key Dates

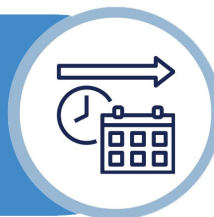
DATE	INFORMATION	FAO
5.00pm, Friday 7 February	Deadline to respond to Core Services Charge Consultation	All
Wednesday 12 February	Return date deadline for Spring Census	SBM/OMs
Friday 14 February	Achieving Equity, Unlocking Potential Conference at Ashton Gate	Heads
Friday 21 March	Deadline to submit to Estates Additional Bid Fund requests to <a href="#">Callum Fear</a> .	Heads, SBM/OMs & Estates
End of Term 4	Ensure mid-point review 1 is completed for both teachers and school leaders are completed as per Performance Development Policy	Heads & Leaders



Please note the following links will only work for those who already have access to the relevant site or folder. If you feel you need to be given permission to access something please [let us know](#).

## Annual Planner 2024/25

Click to view the Annual Planner  
(Via Sharepoint)



## Bulletin Index

Click to access an index of  
previous bulletin articles

## Previous Bulletins

Click to access previous editions of the  
LSP Weekly News Bulletin



## The Beacon

Click to read the latest edition of the  
LSP Newsletter: The Beacon



# SHARE WITH US

Don't forget, you can submit your school news stories to  
be shared in our newsletters and on our social media.

Email your stories to: [newsletter@lsp.org.uk](mailto:newsletter@lsp.org.uk)