



In this week's edition...

ANNOUNCEMENTS, INFO & UPDATES	AUDIENCE	TASK
Introduction	All	Info
Confirmation of 2027-28 Term Dates	All	Info
Vacancy: Primary Senior Headteacher	Primary Heads	Info
Operational Away Day: Change of Date	SBMs/OMs	Info
Reminder: May Moderation Sessions 2026	Primary Heads	Reminder
Reminder: EHCP Requests and Parental Responsibility	Heads & SENDCos	Reminder
Guidance on Deferred Starts and Delayed Entry Requests	Heads	Info
Consultation: Age Range Change at SMRP	All	Info
Consultation: December Pay Date	Headteachers	Info
LSP 10th Birthday Celebrations: Working Party Volunteers	All	Action
Sign up: LSP Governance Conference 2026	Heads, Chairs, Trustees and Clerks	Action
Save the Date: LSP Business Breakfast	All	Info
FINANCE UPDATES	AUDIENCE	TASK
PS Financials - Slow Server Speed	SBMs/OMs & Finance Leads	Info
ESTATES & TRUST SERVICES	AUDIENCE	TASK
Grounds Maintenance - Sports Day	SBMs/OMs	Action
Lockdown Processes Questionnaire	Heads, SBMs/OMs	Action
GOVERNANCE UPDATES	AUDIENCE	TASK

Clerking: Enabling Good Governance	Clerks	Info
CPD UPDATES & OPPORTUNITIES	AUDIENCE	TASK
Upcoming Lighthouse Learning Sessions and CPD Networks	All	Info
Reminder: Teachers Webinars - Maximising the Impact of Learning Partners	Heads & SENDCOs	Action
SW RISE: Term 6 Discovery Morning Events	Heads	Info
SEND Webinar: Successful Scaffolding & Scaffolding for Success	All	Info
KEY LINKS, DATES & DEADLINES		





Introduction

Dear Colleagues,

Last week saw the publication of the [Ofsted Inspection Report](#) for Churchill CE Primary following their inspection in March. It is wonderful to share with you that the school had two areas judged at the strong standard and you will see that the text presents a vivid and positive picture of provision at the school. I would like to congratulate Lorraine Woollven and her team. It is also good to see that despite the inflexibilities of the new framework it can manage to capture the nuance and reality of a school's life.

I write this in the midst of Chew Valley's Ofsted Inspection (today is day two) and we are hoping for the same nuance of judgements there. Having experienced a number of these inspections now, and been on the Ofsted team myself in one case, I can see just how demanding they are on Headteachers. In the context of our Trust we are able to give really strong support to Heads from the Central Team, but it is still an incredibly full-on process. Educational accountability in England is probably more demanding and high stakes than anywhere else in the world and I don't really feel able to defend that culture. What I do see is our Trust being as well-resourced and prepared to cope with the system as it is and our schools doing the things that are right for children rather than right for Ofsted. So far that has allowed us to agree, accept, and in many cases, celebrate the reports and gradings that follow. I suspect that is as good as it gets.

This week has seen SATs, GCSE and Post 16 exams in our schools. It is always impressive to see the schools deliver these important experiences with warmth and professionalism. We have had very positive reports on the culture in Year 11 in all our secondaries and I hope that the young people are doing themselves, and us, proud now that they are in exam season.

With best wishes,

Gary Lewis, Chief Executive



Confirmation of 2027-28 Term Dates

Following the article in the 29 April edition of the bulletin, we can confirm that the term dates for 2027-28 are as follows:

- Term 1 - Wednesday 1 September 2027 to Friday 22 October 2027
- Term 2 - Monday 1 November 2027 to 1 Friday 17 December 2027
- Term 3 - Tuesday 4 January 2028 to Friday 11 February 2028
- Term 4 - Monday 21 February 2028 to Friday 31 March 2028
- Term 5 - Tuesday 18 April 2028 to Friday 26 May 2028
- Term 6 - Monday 5 June 2028 to Friday 21 July 2028

[Click here to view](#) these in a calendar style.

These term dates align with all three local authorities (Bristol, North Somerset and BANES).

INSET dates for 2027-28 will be set in Term 3 2027.

Vacancy: Primary Senior Headteacher

As discussed in the Headteachers' Meeting last week we are creating a new layer of leadership in the primary phase of LSP with the introduction of the new Senior Headteacher Post. This role will add capacity to the Central Education Team as these roles will be for existing Headteachers with a proven track record of school improvement to provide school improvement support to other schools within the Trust. We have been trialling this support this year and we want to expand this opportunity. These roles will be fixed term and those recruited will report to Neil Lankester, Director of Primary Education. [Click here to find out more](#) and to express your interest in this role.

Operational Away Day: Thursday 9 July

Please be aware that the date of the Operational Away Day has been changed to **Thursday 9 July**.

The timings of the day will remain the same.

Further information will be shared in due course.



Reminder: May Moderation Sessions 2026

A reminder that the primary moderation sessions are taking place next week at the ‘English Hub Room’ at St Peter’s Primary School in Portishead (BS20 6BT).

Year Group	Date	Time
EYFS	Monday 18 May	8.30 - 11.30am
Year 1	Monday 18 May	1.00 - 4.00pm
Year 2	Tuesday 19 May	1.00 - 4.00pm
Year 3	Wednesday 20 May	8.30 - 11.30am
Year 4	Wednesday 20 May	1.00 - 4.00pm
Year 5	Friday 22 May	8.30 - 11.30am
Year 6	Friday 22 May	1.00 - 4.00pm

All staff booked to attend these sessions have already been emailed all of the logistical information they need. Any questions please email the [Lighthouse Learning Team](#).

Reminder: EHCP Requests and Parental Responsibility

When a new EHCP Assessment request is made to your local authority, please ensure that all individuals with Parental Responsibility for the child are added.

The ‘requester’ is responsible for ensuring that anyone with parental responsibility is included as the local authority SEND Teams do not have access to any parental contact details unless they are added to the submission.

Guidance on Deferred Starts and Delayed Entry Requests

We have provided some guidance and clarification on the process and responsibilities for responding to deferred start and delayed entry to school requests (both at primary and secondary level). It is important to note that any request to delay entry to school must be considered by your local governing body.

This guidance can be found [on Foldr](#), with the wider Admission Arrangements: *LSP Policies\Admission Arrangements 2026-27*.

If you have any questions or need some assistance please do not hesitate to contact [Eleanor Capel-Davies, Head of Administration](#).



Consultation: Age Range Change at SMRP

St Mary Redcliffe CofE Primary are currently consulting on changing their age range from 3-11 to 4-11 from September 2026.

The proposal is that the school-run nursery provision will close at the end of this academic year. Applications for an external provider to take over this provision are also taking place.

Find out more, included how to provide any feedback or comments, [here](#).

The consultation will close at **5.00pm on Friday 29 May** and feedback will be passed to the Department for Education (DfE) for decision.

Consultation: December Pay Date

As you are aware December salaries are currently paid in advance of the Christmas holiday period. We have received feedback from some schools indicating that while some employees value this 'early-pay' arrangement, others do not. Therefore, we would like to gain the consensus view of staff across our Trust, to see if the pay date in December should be changed.

A short poll, to allow staff to give their views, will be emailed to all LSP staff (directly from the Central Team) next week and will close at **5.00pm on Friday 5 June**.

Please can you remind colleagues of this during your staff briefings/meetings. For those colleagues who do not have easy access to a computer (site staff for example), please can you allow them the opportunity to provide their views as well should they so wish (it is a simple one question online survey).

Any questions please email enquiries@lsp.org.uk

LSP 10th Birthday Celebrations: Working Party Volunteers

As mentioned in Gary's intro last week, we are looking to organise a programme of events and activities over the 2026-27 academic year to celebrate 10 years of Lighthouse Schools Partnership.

We will be forming a small working party to gather ideas and organise activities starting in Term 6.

If you would like to be a part of this please email [Eleanor Capel-Davies, Head of Administration](#) by **Thursday 21 May**.



Sign up: LSP Governance Conference 2026



All Chairs, Clerks, Governors and Trustees are invited to the LSP Governance Conference.

Speakers including Gary Lewis, Adele Haysom and Lucy Livings and the main topic will be the refocussing of LGB responsibilities within LSP.

Please ensure you have completed [this form](#), to confirm your attendance, by 10.00am on Thursday 4 June 2026.

Headteachers are also invited from 5.30-6.45pm to network and hear some key messages from Gary Lewis and Lucy Livings, including saying thank you to Adele Haysom. You are welcome to stay for the main conference section (6.45-8.00pm) as well if you wish to hear about the refocussing of LGBs. The [RSVP form for Headteachers is here](#).

If you have any questions about this event please email enquiries@lsp.org.uk





Save the Date: LSP Business Breakfast

The graphic features a dark blue background with a large, stylized white and blue arrow pointing downwards and to the right. The arrow has orange triangular accents at its ends. In the top right corner, there is a logo for 'Lighthouse Business Partners' which includes a lighthouse icon inside a blue diamond shape. The text 'Lighthouse Business Partners' is written in white, with 'Lighthouse' in a larger font and 'Business Partners' in a smaller font below it. The main title 'Business Breakfast' is written in large, bold, orange letters. Below this, a blue banner with white text reads 'SAVE THE DATE'. The date and time 'Tuesday 23 June 2026 7.30-9.00am' are written in orange, and the location 'Backwell School (BS48 3BX)' is written in white. At the bottom right, a white banner with orange text reads 'Free event with complimentary breakfast' and 'Free parking available on site'. There are also orange triangular accents in the bottom left and top right corners of the graphic area.

Lighthouse Business Partners
Business Breakfast

SAVE THE DATE

Tuesday 23 June 2026
7.30-9.00am
Backwell School (BS48 3BX)

Free event with complimentary breakfast
Free parking available on site

More details, including sign up forms, to be circulated next week.



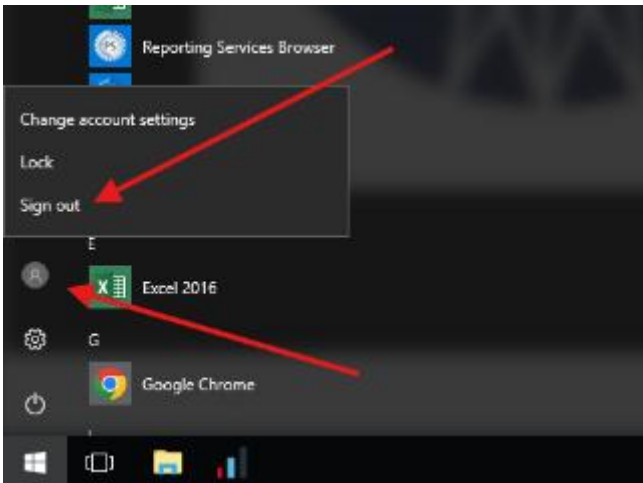
PS Financials - Slow Server Speed

We are receiving reports that the PS Financials Servers appear to be running at a slow speed. IRIS have advised this is due to people with Accounting Licenses not logging out correctly. We would therefore like to remind full Accounting License Users of the correct process to Log Out. Please see instructions below:

1. Within the PS Cloud Desktop select the Home Tab > Log out - please do not press the 'X' in the right-hand corner.



2. Then click the windows flag in the bottom left-hand corner and select the small figure button and click the sign out option. Please do not press 'X' in the right-hand corner.



The Central Finance Team will monitor the license activity and notify users when they are using two licenses (as a result of not logging out correctly) and offer support if required.

Natalie Fear, Finance Manager



Grounds Maintenance - Sports Day

Please can schools [email Sharon at Cornish Garden Services](#) to inform them of the date of their Sports Day as soon as possible. This is so they can ensure preparation works for the event are booked in. It's a very busy time of year and if Cornish aren't aware of the dates, they may not be able to guarantee that any line marking, cuts or other requirements will be able to be undertaken at short notice. Thank you to those schools who have let them know already.

Lockdown Processes Questionnaire

We are currently conducting a questionnaire to establish where schools are in terms of their Lockdown Processes and to look at any actions that may come as a result of any responses.

Can we ask that each school complete this by **9am on Friday 19 June 2026**.

If you have any questions, please [email the Trust Services team](#).





Clerking: Enabling Good Governance

Clerks play a vital role in ensuring that schools are well-governed, effective and forward-looking. As the Enabling Good Governance framework notes, “effective governance professionals enable the board to set and achieve the strategic goals of the organisation” and this is exactly what clerks do for their local governing boards.

Clerking is far more than taking minutes. It is about providing the right information at the right time, supporting good decision-making, and helping the board navigate its legal, strategic and ethical responsibilities. Clerks bring together three core elements:

- Values such as integrity, independence and emotional intelligence
- Knowledge of governance, regulation, risk and the school’s strategic context
- Practical skills of planning, organising, advising and enabling effective meetings

In short, clerks are the quiet enablers of strong governance. Their work ensures that boards can focus on what matters most: improving outcomes for children and young people.

You can read more in the full [Enabling Good Governance competency framework here](#).





Upcoming Lighthouse Learning Sessions and CPD Networks

The full programme of Lighthouse Learning CPD on offer for 2025-26 can be found on the [LSP website](#).

DATE	EVENT	AUDIENCE
Term 6		
Monday 8 June 1.00-3.00pm	Early Years Network In Person @ English Hub, St Peter's Primary	Early Year Leads
Monday 8 June 3.30-4.45pm	Primary Assessment Network Online via MS Teams	Primary Assessment Leads
Monday 8 June 3.30-4.45pm	Trust-wide DSL Network Online via MS Teams	DSLs
Monday 15 June 8.30-11.30am	Primary English Network In Person @ English Hub, St Peter's Primary	Primary English Leads
Monday 15 June 1.00-4.00pm	Church Schools Network In Person @ English Hub, St Peter's Primary	Church School Leaders
Wednesday 17 June 3.30-5.00pm	An Introduction to Maximising the Impact of Learning Partners with Sally Franklin Online Webinar via MS Teams	All teachers & SLT in schools moving to Learning Partners in September 2026
Thursday 18 June	LSP Governance Conference In person at Backwell School	Chairs, Governors, Trustees and Clerks
Monday 22 June 3.30-4.30pm	Primary Priority Pupils Network Online via MS Teams	Primary Priority Pupil Leads
Monday 24 June 3.30-5.00pm	Practical Strategies for Maximising the impact of Learning Partners with Suzy Divine Online Webinar via MS Teams	All teachers & SLT in schools moving to Learning Partners in September 2026
The rest of the Term 6 events will follow in due course.		



Reminder: Teachers Webinars - Maximising the Impact of Learning Partners

As you are aware, part of the training and support package from Sally Franklin (MITA, UCL) and the LSP Inclusion Team around Learning Partners includes an introductory webinar from Sally, designed for Teachers and a follow up webinar to support practical implementation. Please note, Webinar 1 is an essential part of the training package and **all teachers and SLT must attend**. It has proven beneficial for schools to attend both sessions.

Please can you ensure that these dates are in your CPD calendars and use the links below to register your school's place. Please can one contact from each school register; the expectation is that schools will join as a group.

- Teachers Webinar 1: Wednesday 17 June 3.30 - 5.00pm (Online)
[Register: Teachers Webinar 1 \(17 June\)](#)
- Teachers Webinar 2: Wednesday 24 June 3.30 - 5.00pm (Online)
[Register: Teachers Webinar 2 \(24 June\)](#)

Please do [let us know](#) if you have any questions.

Suzy Divine, Lead Teacher for SEND

South West RISE Team: Term 6 Discovery Morning Events

The South West RISE Team are offering a series of events aimed at Headteachers and School Leaders, designed to showcase excellent practice around key national and regional priorities. The sessions are an opportunity for leaders to see outstanding work in action, followed by a focused call-to-action discussion. During Term 6, RISE are offering events on:

- Reception year quality
- Key Stage 4 attainment
- Primary attendance
- Inclusive mainstream

Use [this link to find out more about the Discovery Morning Events](#) including how to sign up.



SEND Webinar: Successful Scaffolding & Scaffolding for Success

All LSP staff are invited to join this upcoming SEND webinar, hosted by Suzy Divine, Lead Teacher for SEND taking place next week.

[Click here to book your place.](#)

SEND WEBINAR



'Successful Scaffolding and Scaffolding for Success'
Led by Suzy Divine, Lead Teacher for SEND

WEDNESDAY 20 MAY 2026 3.45-4.45PM

All Lighthouse staff are invited to join this upcoming SEND webinar.

This session will focus on:

- Scaffolding principles for SEND
- Planning for scaffolding and scaffolding for success
- Scaffolding strategies and practical adaptations in the classroom

The session largely draws on examples from KS1-3, but the practical strategies can be adapted for any age group.

(NB: Some schools have had the face-to-face version of this training, so this will be a repeat for them, but will be suitable for members of staff who were unable to attend).

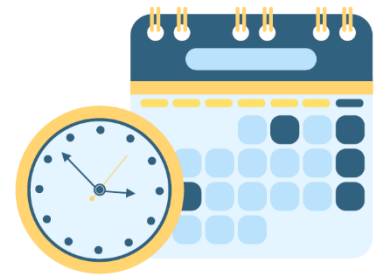
This session will be recorded and will be made available for a limited time after the event. Please have smart devices available to take part in any interactive sections.

[BOOK YOUR PLACE](#)

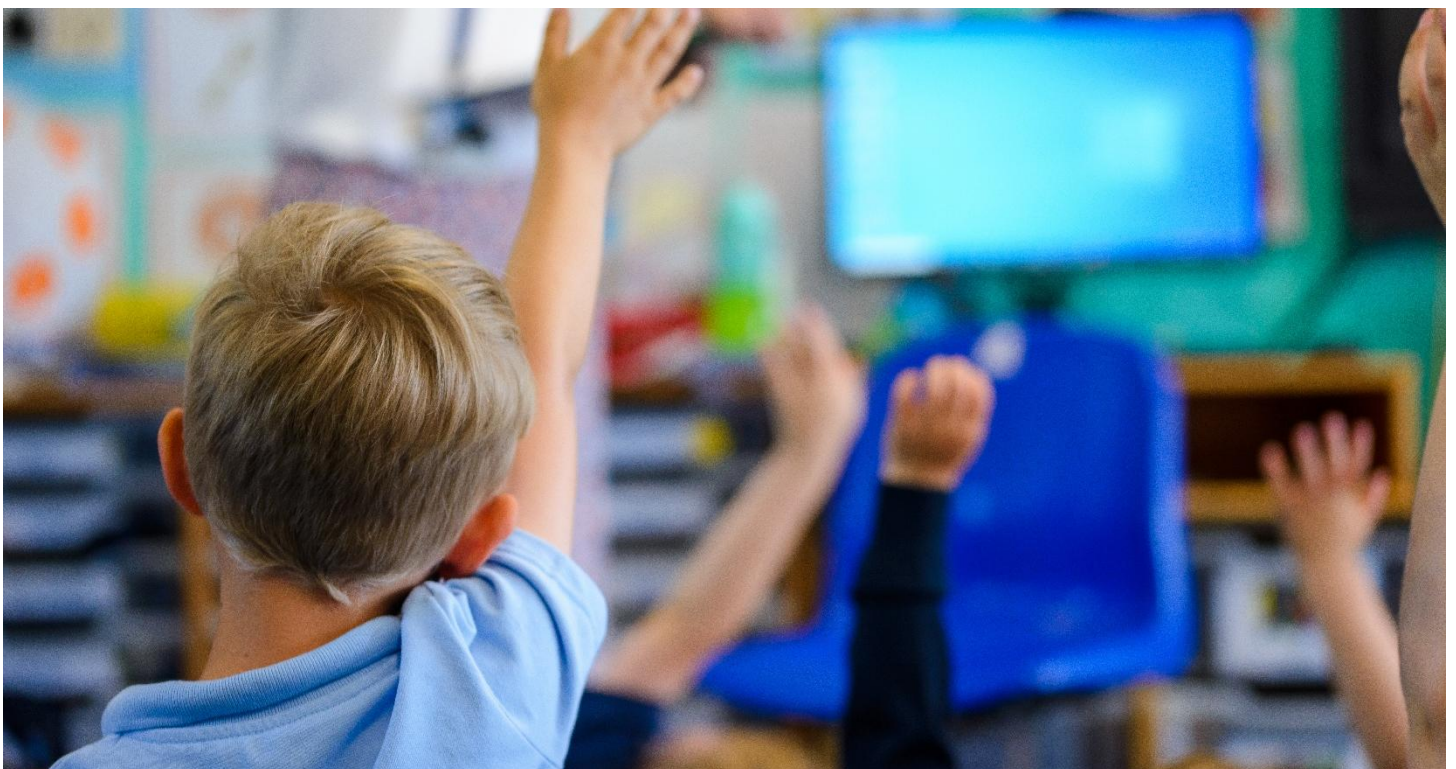
KEY LINKS, DATES & DEADLINES



These reminders do not replace the LSP Annual Planner so please ensure you are checking this regularly (link on next page).



DATE	INFORMATION	FAO
11 - 14 May	KS2 SATs	All (Primary focused)
5.00pm on Friday 15 May	Deadline to respond on Annual Support Fund Consultation. Comments and feedback should be emailed to enquiries@lsp.org.uk	Heads, Chairs & SBMs
Thursday 21 May	Summer Census Date	Headteachers & SBMs/OMs
9.00am on Friday 22 May	Deadline to provide any comments and feedback on Requesting Time to Train and Long Service and retirement Award Policies.	All
18 - 22 May	Primary Moderation @ St Peters	Primary Headteachers





Please note the following links will only work for those who already have access to the relevant site or folder. If you feel you need to be given permission to access something please [let us know](#).



Annual Planner 2025/26

Click to view the Annual Planner for next academic year (Via Sharepoint)

Bulletin Index

Click to access an index of previous bulletin articles



Previous Bulletins

Click to access previous editions of the LSP Weekly News Bulletin

The Beacon

Click to read the latest edition of the LSP Newsletter: The Beacon



SHARE WITH US

Don't forget, you can submit your school news stories to be shared in our newsletters and on our social media.

Email your stories to: newsletter@lsp.org.uk



LIGHTHOUSE
SCHOOLS PARTNERSHIP